

BLUE GROUSE SIGHTING AT
MT. ABEL, KERN COUNTY, CA -
SEPT. 23, 1976.

MAVIS HASEY, USFS, JAN HAMBURY,
DICK SMITH, S.B. MUSEUM OF NAT. HIST.

IN THE VICINITY OF THE SKI FACILITIES
ON THE NORTH SLOPES OF MT. ABEL AT
THE 7000 FT. LEVEL BELOW THE SKI LODGE.
NW 426, T. 9 N., R. 22 W. ON A SLOPE COVERED
WITH PINE AND FIR WITH SCATTERED
UNDERBRUSH CLEAR ENOUGH TO WALK
THROUGH.

STARTED DOWN AT APPROXIMATELY
1300 HRS. HEADING DOWN SLOPE TO N.
WITH CAMP CONDOR BELOW IN VIEW -
AT BOTTOM OF VALLEY. WHILE
WORKING OUR WAY DOWN TO AN OLD
CONDOR ROOST TREE, WE HEARD THE
SOUND OF A GOOD-SIZED BIRD MOVING
IN A TREE OVER OUR HEADS. I
SAW THE BIRD FLY TO A NEARBY
JEFFREY PINE JUST DOWN THE
SIDE OF THE SLOPE. THE OTHERS
HEARD IT - SOUNDING LIKE THE
RUSTLING OF A SHOPPING SACK - AS
IT LANDED GIVING ALL OF US A
GOOD PROFILE OF ITS FULL BODY.
BIRD WAS APPROX SIZE OF A
RHODE ISLAND RED CHICKEN -
LARGE BODY, SMALL HEAD,

GOOD SIZE; SQUARE END TAIL WITH
A LIGHT BAND AT END - BODY APPEARED
TO BE SPECKLED AND DARK GRAY
WITH NO WARM COLOR APPARENT - TO
US, SAW FOR ABOUT 3 OR 4 SECONDS -
THEN BIRD FLEW, FLAPPING 3 OR 4
TIMES THEN COASTING, DROPPING
RAPIDLY DOWN CANYON, DISAPPEARING
INTO TREES BELOW - WINGS WERE
CURVED STEEPLY DOWN AT ENDS AS
IT COASTED - I HEARD NO CALL
AS IT MOVED OUT - TRIED TO GET
BIRD UP AGAIN BUT COULD NOT -
PICKED UP A FEW SMALL BODY
FEATHERS FROM THE SLOPE - MAY OR
MAY NOT BE ASSOCIATED. APPEARANCE
OF BIRD WAS DEFINITELY THAT OF
A GALLIFORM



DICK
SMITH
SEPT. 24.

7

GEOLOGICAL SURVEY

CORPS OF

34°52'30" N

119°15'

299000m E

296

297

12730'

298

299

219

3461000m N

MARICOPA 47 MI

13 MI. TO U.S. 999

VENTURA CO
KERN CO

Road Maintenance Sta

Order Center

Shed

Shed

Shed

Shed

Shed

Shed

Shed

Shed

Shed

Shed

Shed

Shed

Shed

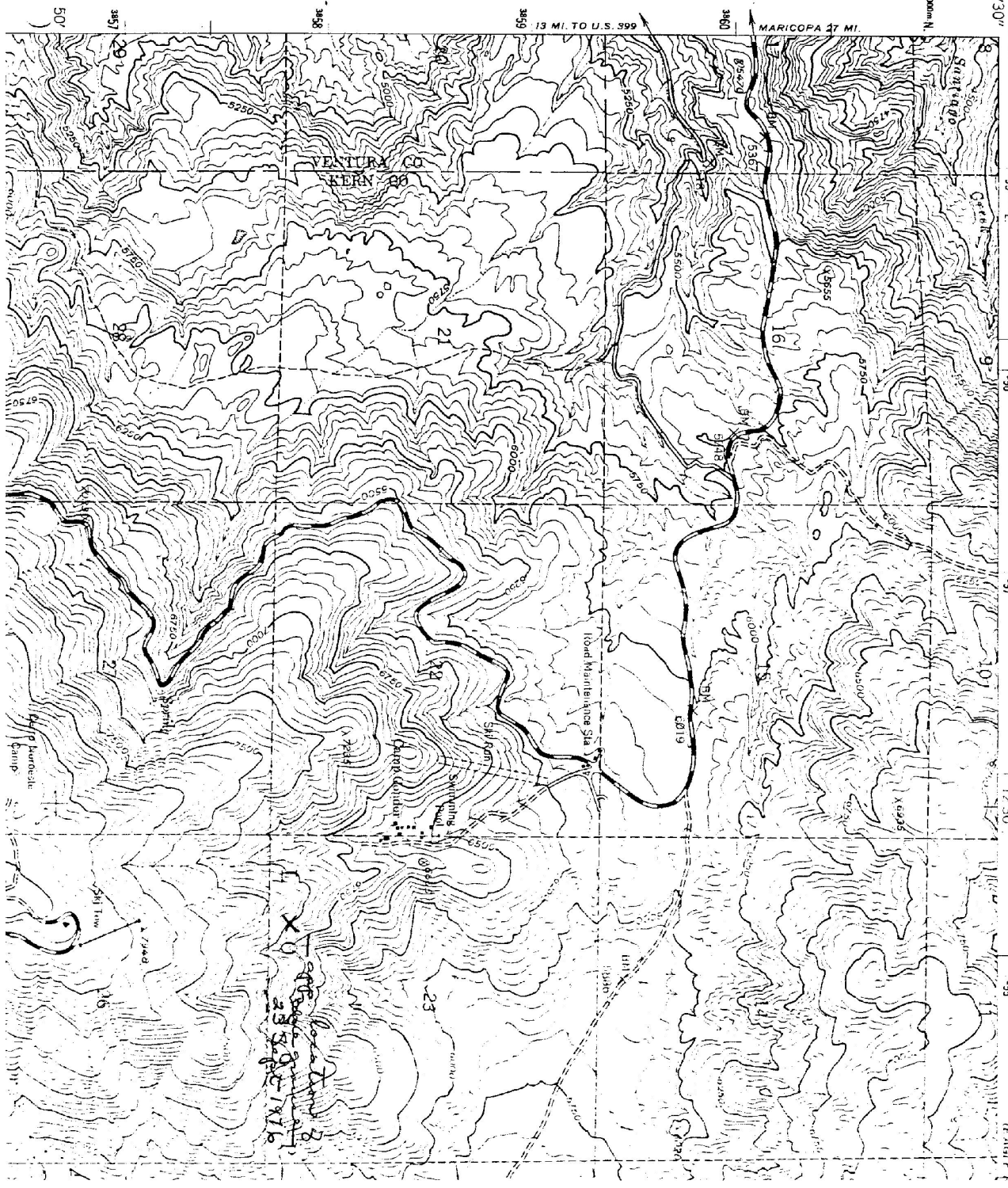
Shed

Shed

Shed

Shed

Handwritten:
X
Sagehen
23 S. 8. 1916



50'

345

348

349

350

351